

YUGONG MANUFACTURING QUALITY ASSURED

渝工智造 · 品质放心



COMPANY PROFILE

公司简介

ZHEJIANG YUGONG COMPLETE EQUIPMENT CO., LTD

浙江渝工成套设备有限公司



**EXCELLENT
EQUIPMENT**
设备精良

浙江渝工成套设备有限公司是一家集研究探索、设计开发、制造、生产、销售、工程安装、服务于一体的综合性企业，渝工成套设备拥有健全的标准化管理体系，采用国际化管理模式，是专业化、自动化、规范化和程序化的实体企业。秉持先进的开发理念，依托专业的团队组合，致力于为客户提供优质满意的服务。总部坐落于浙江泵阀之乡滨海工业园区，业务涵盖工业所需的电动执行器、气动执行器、阀门、法兰、管件、泵电器、电缆、环保设备、制氢制氧、海水淡化等成套设备、智能系统、机电一体化产品。



STABLE QUALITY
质量稳定

公司拥有柔性生产线、加工中心、CNC数控中心、大型卧式床、立车、等离子堆焊、超频真空热处理设备等先进生产设施；建立了覆盖多种工况管线配阀以及机电一体化、智能系统的性能检测和试验台，设有CAD设计中心及三维立体模拟制造研发设计系统，同时引进了核质谱检测仪、直读式光谱分析仪、O型圈抗爆试验台、阀门、法兰、管件、智能一体化弯曲实验台、压力测试试验台、防爆智能检测台等多种性能测试设备，为新产品研发生产提供了科学保障。

渝工成套设备主导产品有：智能系统控制阀、调流调压阀、化工专用阀、石油阀、水利阀、电力阀、海水淡化阀、环保成套设备阀、污水处理阀、制药专用阀、液氮超低温阀、超高温阀、各种材质阀（包括2205/2507/304L/310S/特殊钢阀）、自密封阀、脱硫脱销阀、减温减压装置、铝厂专用阀，以及日标、美标、德标、俄标、电气动阀、法兰、管件、工业自动控制系统、五金、电气电缆以及各种机械产品制造等系列产品。



**PROFESSIONAL
TEAM**
专业团队

渝工成套设备产品应用于水利、电力、环保、排污、楼宇、石油、化工、冶炼、军工、制药、食品、燃气、市政营网等多个工况系统。秉持长远发展战略，坚持开拓创新，走“产学研”之路，致力成为阀业领域中坚力量，愿与广大客户携手同行、共启未来。



Zhejiang YuGong Complete Equipment Co., Ltd. is a comprehensive enterprise integrating research and exploration, design and development, manufacturing, production, sales, engineering installation, and service. YuGong Complete Equipment has a complete standardized management system and adopts an international management model. It is a professional, automated, standardized and procedural entity enterprise. Adhering to advanced development concepts and relying on a professional team combination, it is committed to providing customers with high-quality and satisfactory services. The headquarters is located in the coastal industrial park of the pump and valve hometown of Zhejiang Province. Its business covers complete sets of equipment such as electric actuators, pneumatic actuators, valves, flanges, pipe fittings, pump electrical appliances, cables, environmental protection equipment, hydrogen and oxygen production, seawater desalination, etc., as well as intelligent systems and mechanical-electrical integration products.

The company possesses advanced production facilities such as flexible production lines, processing centers, CNC numerical control centers, large horizontal lathes, vertical lathes, plasma welding equipment, ultra-high frequency vacuum heat treatment equipment, etc. It has also established performance testing and experimental platforms covering various working conditions for pipeline valve assembly and mechanical-electrical integration, as well as intelligent systems. A CAD design center and a three-dimensional simulation manufacturing R&D design system have been set up. At the same time, various performance testing equipment such as nuclear mass spectrometers, direct reading spectrometers, O-ring explosion resistance test benches, intelligent integrated bending test benches, pressure testing test benches, explosion-proof intelligent detection benches, etc. have been introduced, providing scientific guarantees for the research and production of new products.

The main products of YuGong complete equipment include: intelligent system control valves, flow and pressure regulating valves, chemical industry-specific valves, petroleum valves, water conservancy valves, power valves, seawater desalination valves, environmental protection complete equipment valves, sewage treatment valves, pharmaceutical-specific valves, liquid nitrogen ultra-low temperature valves, ultra-high temperature valves, various material valves (including 2205/2507/304L/310S/ special steel valves), self-sealing valves, desulfurization and desulfurization valves, temperature reduction and pressure reduction devices, aluminum plant-specific valves, as well as products such as Japanese standards, American standards, German standards, Russian standards, electrically actuated valves, flanges, pipe fittings, industrial automatic control systems, hardware, electrical cables, and various mechanical products manufacturing and so on.

YuGong complete equipment products are applied in various industrial systems such as water conservancy, power, environmental protection, sewage discharge, buildings, petroleum, chemical industry, smelting, military industry, pharmaceuticals, food, gas, and municipal network. Adhering to a long-term development strategy, insisting on innovation and exploration, following the "industry-university-research" path, it strives to become a key force in the valve industry field, and is willing to work hand in hand with all customers to jointly create the future.

BUSINESS ADVANTAGE

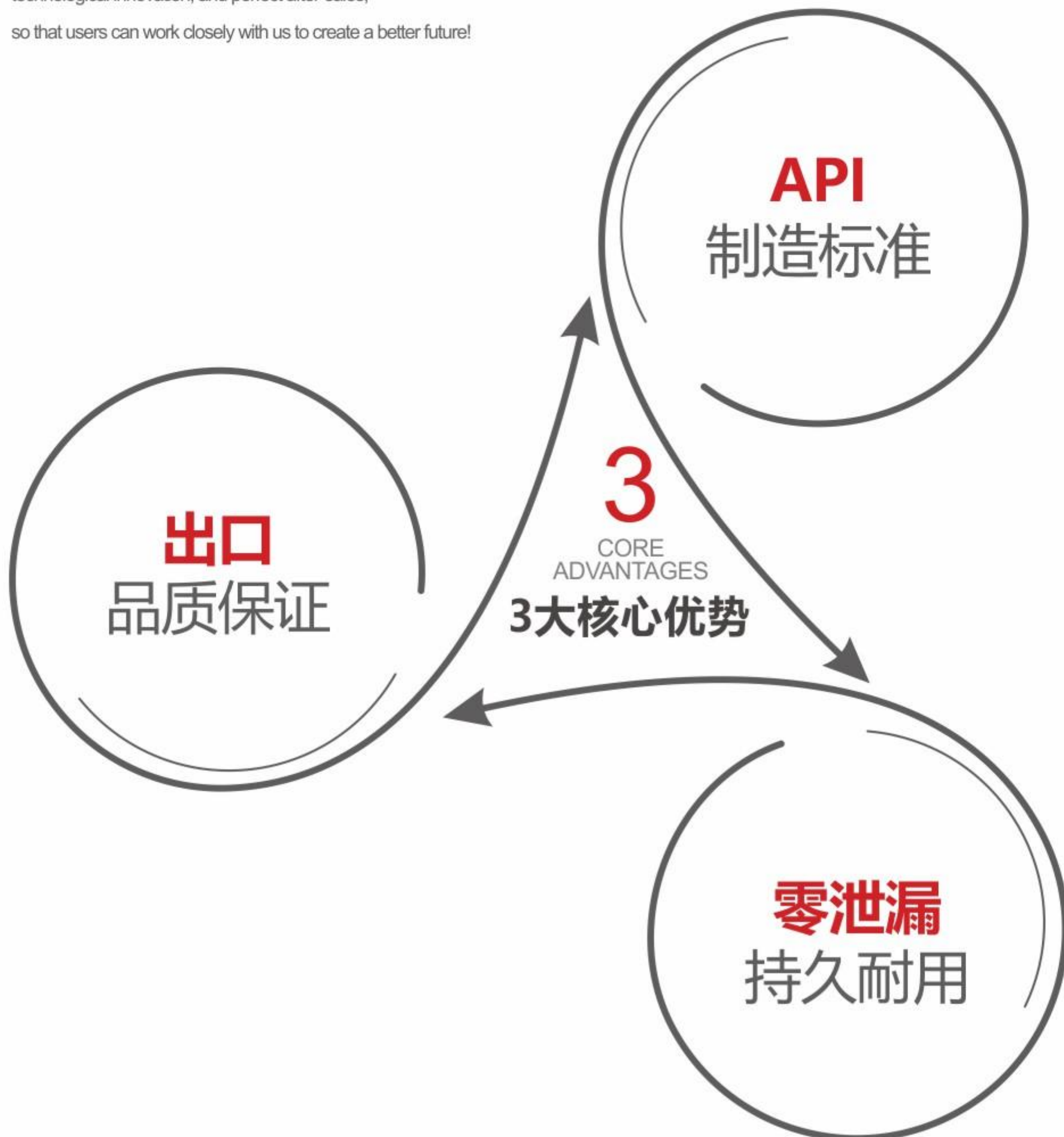
企业优势

在激烈的市场竞争中

始终以诚信的经营、技术的创新、完善的售后为用户提供全方位服务，
让用户与我们紧密协作，共创美好未来！

In the fierce market competition,

we always provide users with a full range of services with honest management,
technological innovation, and perfect after-sales,
so that users can work closely with us to create a better future!



A large offshore oil drilling rig stands in the middle of a blue sea under a blue sky with scattered white clouds. The rig has a tall derrick and various platforms. In the foreground, a yellow safety railing is visible. A semi-transparent red rectangle is overlaid on the middle of the image, containing white text.

专业化 SPECIALIZATION
科技化 TECHNOLOGICAL
国际化 GLOBALIZATION

APPLICATION FIELD

应用领域

公司产品广泛运用于
石油、化工、天然气、轻工、电力、制药、冶金、
供水、军工等行业。

The company's products are widely used in petroleum,
chemical, natural gas, light industry, power, pharmaceutical, metallurgy,
water supply, military industry and other industries.



Petroleum
石油



Architecture
建筑



Biochemistry
生化



Metallurgy
冶金



Chemistry
化工



Electricity
电力



Hydraulic
水利



Environmental
环保

MARKETING NETWORK

营销网络



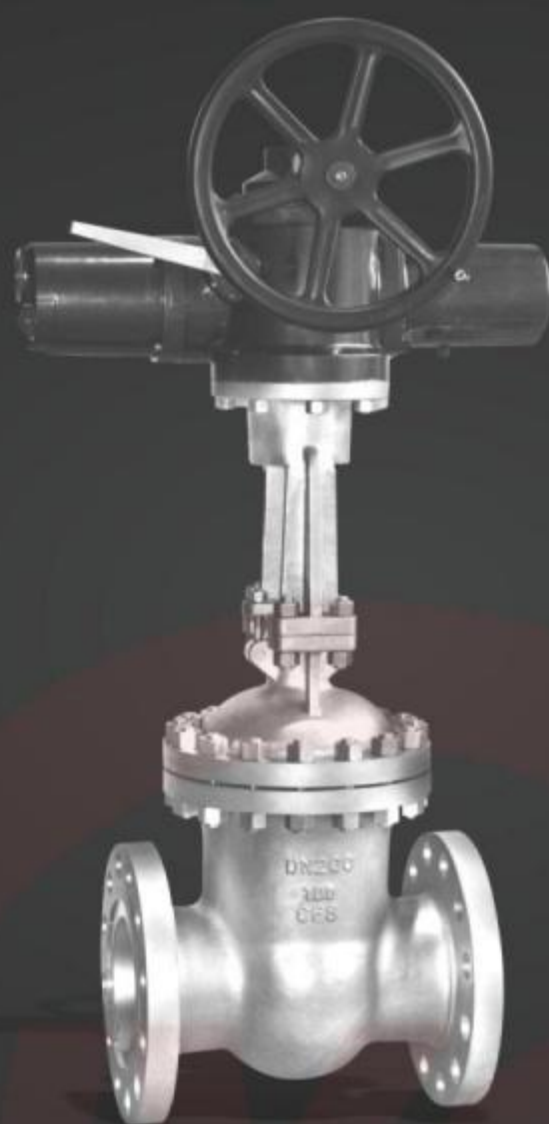
浙江渝工成套设备有限公司已在全国多省市搭建完善的产品营销体系，下设多家分公司及办事处；同时积极开拓国际市场，致力成为全球工业阀门领域生产商与系统解决方案综合服务商。

Zhejiang YuGong Complete Equipment Co., Ltd. has established a complete product marketing system across multiple provinces and cities in China, with several branches and offices under its jurisdiction. At the same time, it is actively expanding into the international market and strives to become a comprehensive service provider for global industrial valve manufacturers and system solutions.



GATE VALVE SERIES

闸阀系列



API
FLANGE GATE
VALVE
美标法兰闸阀

GB
ELECTRIC GATE
VALVE
国标电动闸阀



美标法兰闸阀
API Flange gate valve



美标法兰闸阀
API Flange gate valve



美标法兰闸阀(铜)
API Flange gate valve
(copper)



电站闸阀
Power station gate
valve

GLOBE VALVE SERIES

截止阀系列

API
FLANGE GLOBE
VALVE
美标法兰截止阀



国标法兰截止阀
GB Flanged globe valve



电站截止阀
Power station globe valve



氧气截止阀
Insulated globe valve



国标法兰截止阀
GB Flanged globe valve



氨用截止阀
Ammonia globe valve



波纹管截止阀
Corrugated pipe globe valve

BALL VALVE SERIES

球阀系列



API
FLANGE BALL VALVE
美标法兰球阀



美标法兰球阀
API Flanged ball valves



美标法兰球阀
API Flanged ball valves



美标法兰球阀
API Flanged ball valves

BALL VALVE SERIES

球阀系列



日标法兰球阀
JIS Flanged ball valves



国标法兰球阀
GB Flanged ball valves



法兰硬密封球阀
Flange hard seal ball valve



三片式高压球阀
Three-piece high-pressure ball valve



固定式法兰球阀
Fixed flange ball valve



电动高压球阀
Electric high pressure ball valve



法兰三通球阀
Flange tee ball valve



放料球阀
Feeding the ball valve



保温球阀
Insulation ball valve

CHECK VALVE SERIES

止回阀系列



API
FLANGE CHECK VALVE
美标法兰止回阀



美标法兰止回阀
API Flange check valve



国标法兰止回阀
GB Flange check valve



国标升降式止回阀
GB Lifting check valve



对夹止回阀
Clamp check valve

**FILTER/
FORGED STEEL VALVE SERIES**
过滤器/锻钢阀系列

FILTER SERIES
过滤器系列



美标法兰过滤器
API Flange filter



国标法兰过滤器
GB Flange filter



蓝式过滤器
Blue filter

FORGED STEEL VALVE SERIES
锻钢阀系列



锻钢法兰闸阀
Forged steel flange
gate valve



锻钢法兰截止阀
Forged steel flange
globe valve



锻钢对焊截止阀
Forged steel butt
welding globe valve



锻钢对焊闸阀
Forged steel butt
welding gate valve



自密封截止阀
Self sealing globe valve



锻钢法兰球阀
Forged steel flange
ball valve



锻钢法兰止回阀
Forged steel flange
check valve



锻钢过滤器
Forged steel filter

CAST STEEL VALVE SERIES

蝶阀系列



FLANGE
BUTTERFLY VALVE
法兰蝶阀



蜗轮法兰蝶阀
Worm wheel flange
butterfly valve



对夹蝶阀
Clamp butterfly valve



气动对夹蝶阀
Pneumatic clamp
butterfly valve



法兰蝶阀
Flange butterfly valve

CAST STEEL VALVES / HYDRAULIC CONTROL VALVES SERIES

铸钢阀门/水力控制阀系列

CAST STEEL VALVES

铸钢阀门



铸钢美标闸阀
API Cast steel gate valves



铸钢国标闸阀
GB Cast steel gate valves



电动截止阀
Electric stop valve



铸钢止回阀
Cast steel check valve



铸钢美标球阀
API Cast steel ball valve

HYDRAULIC CONTROL VALVE SERIES

水力控制阀系列



200X型减压阀
Pressure reducing valve



600X型电动控制阀
Electric control valve



F745X- $\frac{10}{25}$ 多功能水泵控制阀
Multi-function pump control valve



节能消声止回阀
Energy-saving silent check valve



HH44Z/X、HH44- $\frac{10}{25}$
微阻缓闭止回阀
Micro-stop slow closing check valve



Hh47 $\frac{H}{X}$ H47XF
蝶式缓冲止回阀
Butterfly buffer check valve



HH $\frac{46}{49}$ - $\frac{10}{25}$ 型
微阻缓闭蝶式止回阀
Micro-stop slow closing butterfly check valve



H142X
液压水位控制阀
Hydraulic water level control valve

FLUORINE-BUTTERFLY VALVE / ALL-WELDED BALL VALVE SERIES

衬氟阀门/全焊接球阀系列

FLUORINE-BUTTERFLY VALVES

衬氟阀门



衬氟截止阀
Fluorine-butterfly
globe valve



衬氟闸阀
Fluorine-butterfly
gate valves



衬氟电动球阀
Fluorine-butterfly
electric ball valve



衬氟手动球阀
Fluorine-butterfly manual
ball valve



衬氟隔膜阀
Fluorine-butterfly
diaphragm valve



衬氟止回阀
Fluorine-butterfly
check valve



衬氟止回阀
Fluorine-butterfly
check valve



衬氟蝶阀
Fluorine-butterfly
butterfly valve

ALL-WELDED BALL VALVE SERIES

全焊接球阀系列



全焊接球阀
All welded ball valve



全焊接管线球阀
All welded pipeline ball valve



全焊接法兰球阀
All welded flange ball valve



全焊接球阀
All welded ball valve



全焊接带滤网球阀
All welded ball valve
with strainer



全焊接法兰球阀
All welded flange ball
valves



全焊接球阀
All welded ball valve



全焊接带手柄球阀
All welded ball valve with handle

THREADED VALVE SERIES

丝扣阀门系列



一片式球阀
One-piece ball valve



广式球阀
Cantonese style ball valves



两片式球阀
Two-piece ball valve



三片式球阀
Three-piece ball valve



三片式高平台球阀
Three-piece high platform ball valve



三通球阀
The 3-way ball valve



丝扣闸阀
Threaded gate valve



丝扣截止阀
Threaded globe valve



丝扣截止阀
Threaded globe valve



丝扣止回阀
Threaded check valve



丝扣止回阀
Threaded check valve



丝扣过滤器
Thread filter

OTHER VALVE SERIES
其他阀门系列

FLANGE SERIES
法兰系列



平焊法兰
Flat welding flange



带颈平焊法兰
Flange with neck flat welding



对焊法兰
Butt welding flange



不锈钢法兰盖
Stainless steel flange cover



螺纹钢制管法兰
Pipe flange of rebar

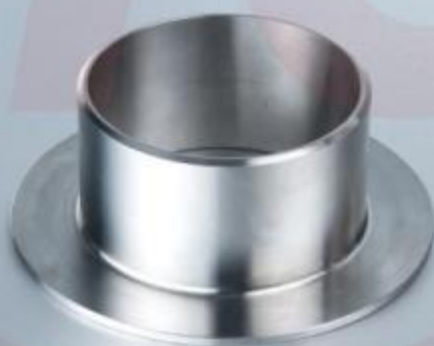


换热器管板
Heat exchanger tube plate

ALL-WELDED BALL VALVE SERIES
管件系列



不锈钢四通
Stainless steel cross



不锈钢翻边
Stainless steel flanging



不锈钢封头
Stainless steel head



不锈钢大小头
Stainless steel size head



不锈钢三通
Stainless steel tee



不锈钢45°弯头
Stainless steel 45° elbow



不锈钢90°弯头
Stainless steel 90° bend

协助共赢 兼容并蓄

传承创新 精益求精

Assist in a win-win situation
Inheriting innovation, excellence



地址：浙江省温州市龙湾区永中街道城南村迎川路23号
手机：186 2150 0387 / 165 8788 1818

Address: No. 23 Yingchuan Road, Chengnan Village, Yongzhong Street, Longwan District, Wenzhou, Zhejiang
Mobile: 189 6877 1655



扫码咨询/WeChat